



human energy®

Snapp Teslovich Pad Non-Coal Packet Fayette County, PA

Jason Luke
G&G Ops Geologist
3/26/19

A large, illuminated Chevron logo is mounted on the side of a building. The logo is composed of two chevrons, one blue and one red, stacked vertically. Below the logo, the word "chevron" is written in a stylized, lowercase font, also illuminated. The building's facade is white, and the sky in the background is a pale, hazy blue.

chevron

- This information is gathered from:
 - Mineral Resources Report M 68 (Bituminous Coal Resources in Western Pennsylvania)

Plate 1 (Upper Mercer Coal): Inferred

Plate 2 (Brookeville Coal): Inferred

Plate 3 (Clarion Coal): Inferred

Plate 4 (L. Kittaning Coal): Inferred

Plate 5 (M. Kittaning Coal): Inferred

Plate 6 (U. Kittaning Coal): Inferred

Plate 7 (L. Freeport Coal): Inferred

Plate 8 (U. Freeport Coal): Inferred

Plate 9 (Pittsburgh Coal): Mined Out

Plate 10 (Redstone Coal): Inferred

Plate 11 (Sewickley Coal): Inferred

Plate 12 (Waynesburg Coal): Not Present

Plate 13 (Washington Coal): Not Present



EXPLANATION

RELIABILITY OF DATA AND
GENERAL THICKNESS



© 2016 Chevron

Plate 2: Brookville Coal

EXPLANATION
RELIABILITY OF DATA AND
GENERAL THICKNESS



Inferred.



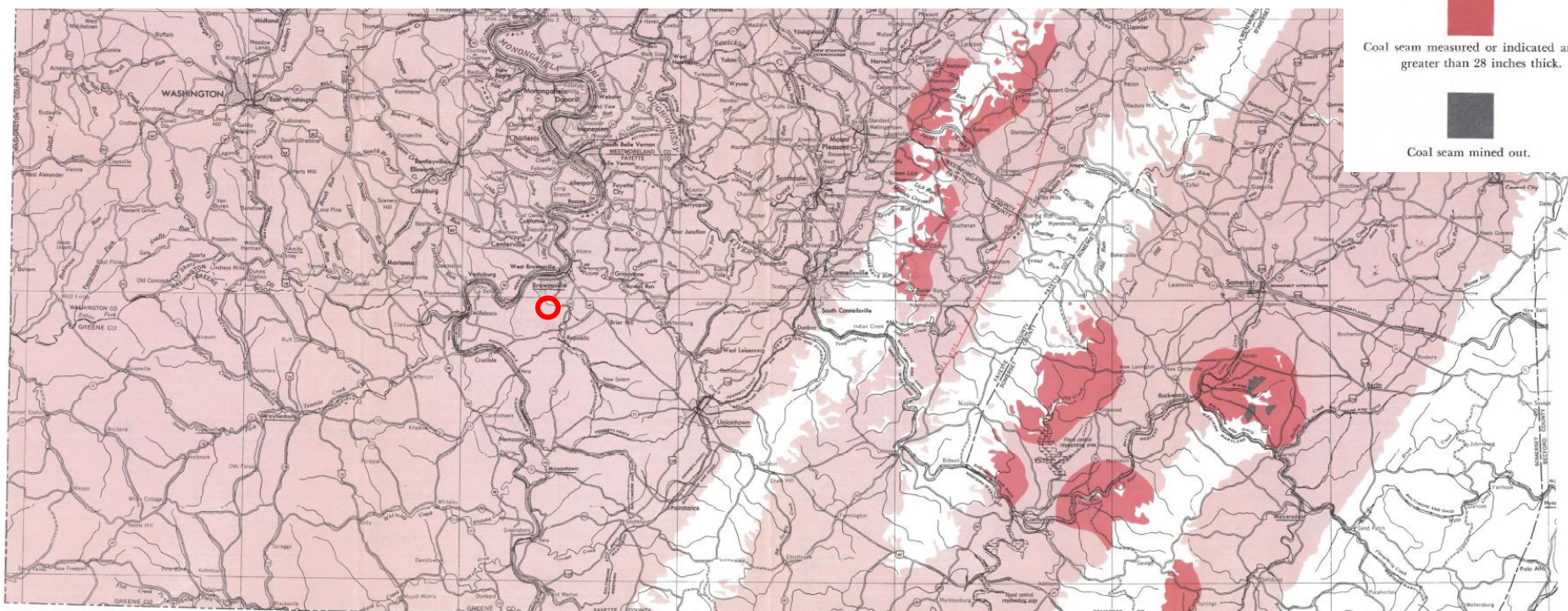
Coal seam measured or indicated and
less than 28 inches thick.



Coal seam measured or indicated and
greater than 28 inches thick.



Coal seam mined out.



Drafted by John G. Kuchinski

DISTRIBUTION AND THICKNESS OF THE BROOKVILLE COAL

Plate 3: Clarion Coal

EXPLANATION
RELIABILITY OF DATA AND
GENERAL THICKNESS



Inferred.



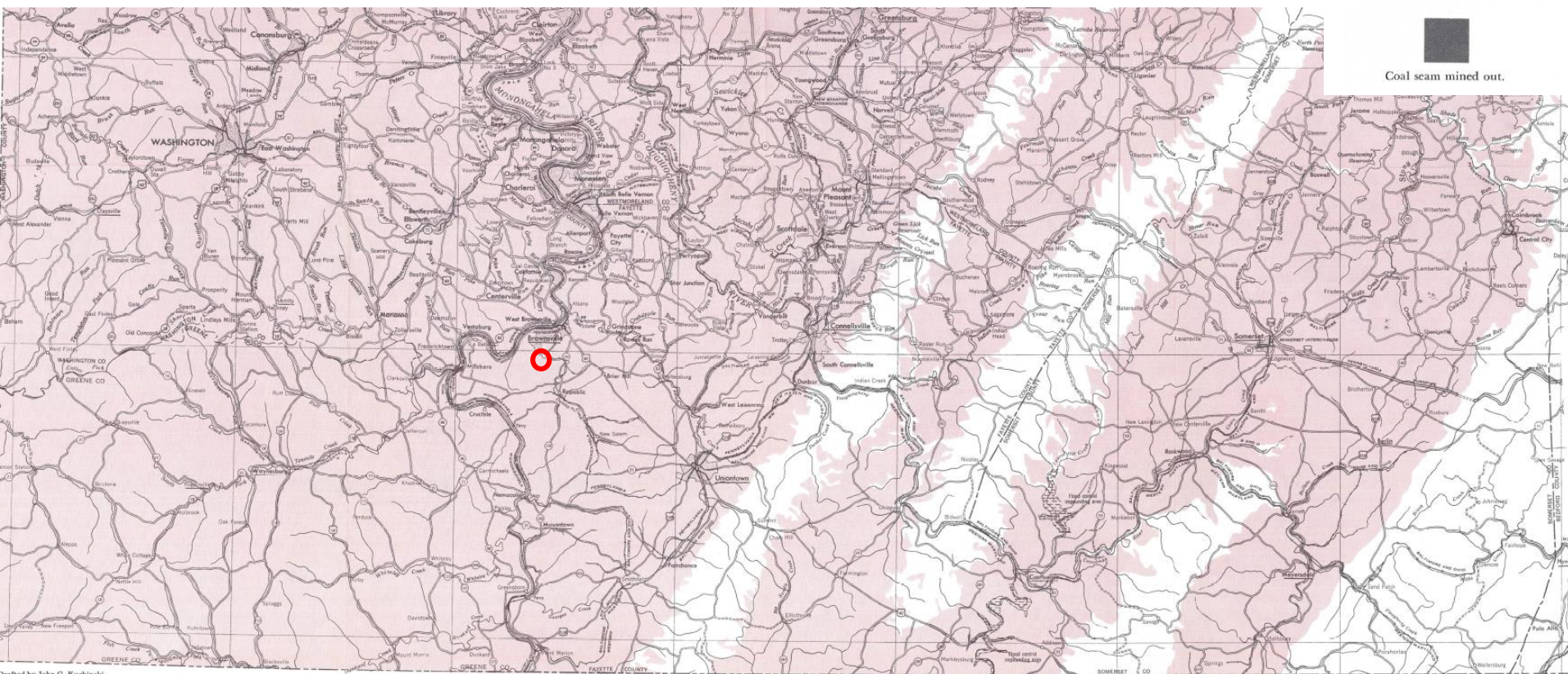
Coal seam measured or indicated and
less than 28 inches thick.



Coal seam measured or indicated and
greater than 28 inches thick.



Coal seam mined out.



Drafted by John G. Kuchinski

DISTRIBUTION AND THICKNESS OF THE CLARION COAL



Plate 4: L. Kittanning Coal

EXPLANATION
RELIABILITY OF DATA AND
GENERAL THICKNESS



Inferred.



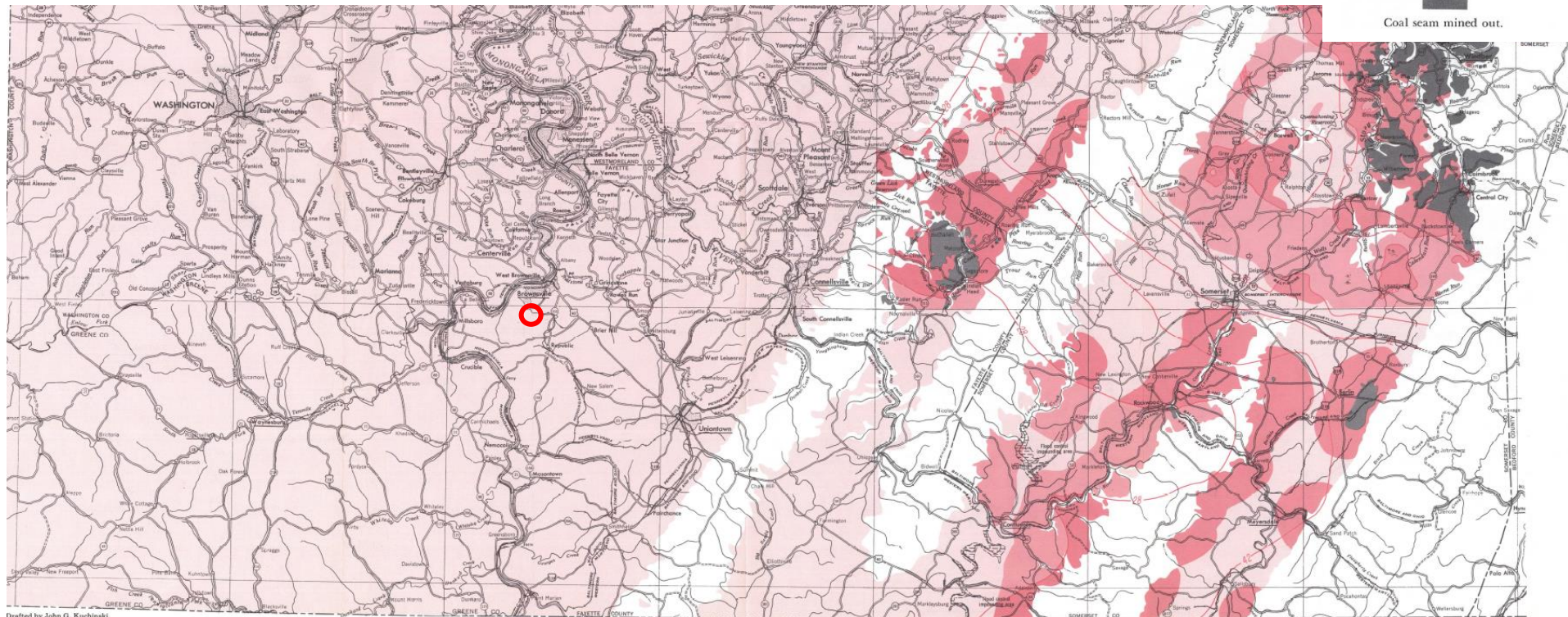
Coal seam measured or indicated and
less than 28 inches thick.



Coal seam measured or indicated and
greater than 28 inches thick.



Coal seam mined out.



Drafted by John G. Kushinski

DISTRIBUTION AND THICKNESS OF THE LOWER KITTANNING COAL



Plate 5: Middle Kittanning Coal

EXPLANATION
RELIABILITY OF DATA AND
GENERAL THICKNESS



Inferred.



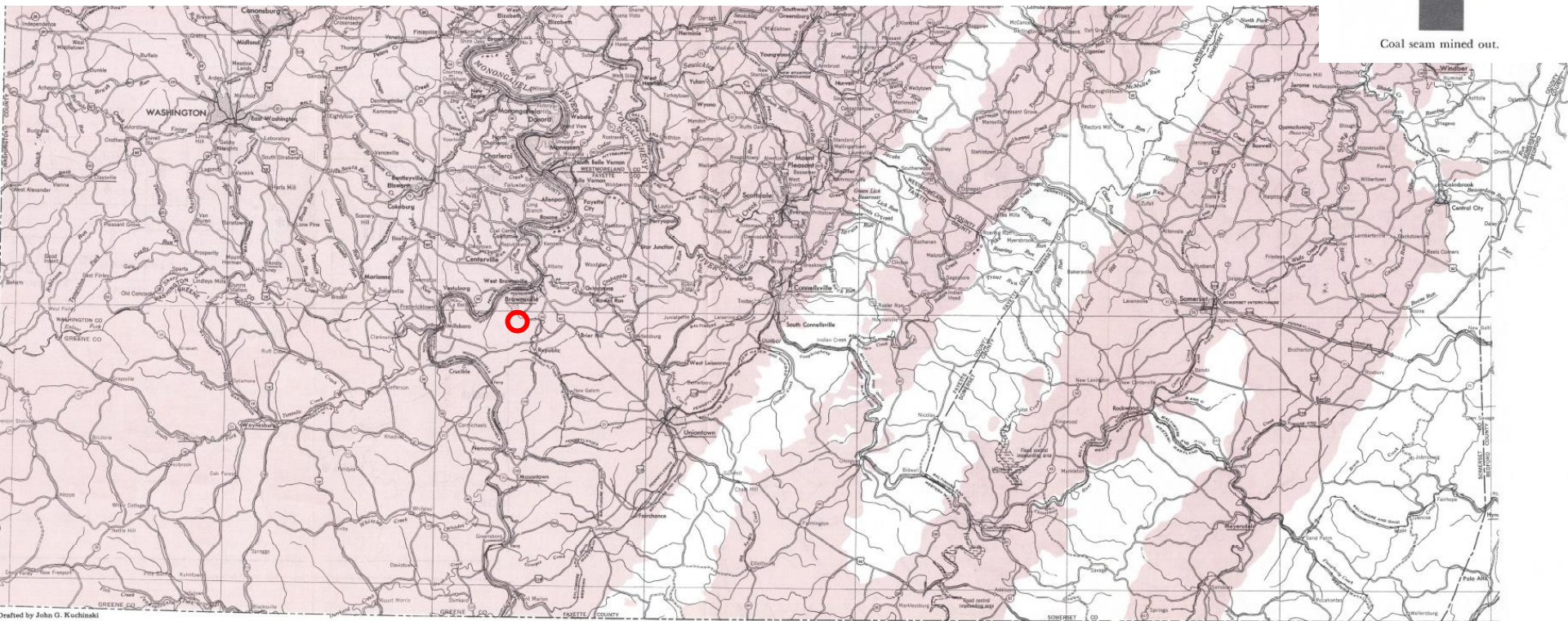
Coal seam measured or indicated and
less than 28 inches thick.



Coal seam measured or indicated and
greater than 28 inches thick.



Coal seam mined out.



Drafted by John G. Kuchinski

DISTRIBUTION AND THICKNESS OF THE MIDDLE KITTANNING COAL

Plate 6: Upper Kittanning Coal

EXPLANATION
RELIABILITY OF DATA AND
GENERAL THICKNESS



Inferred.



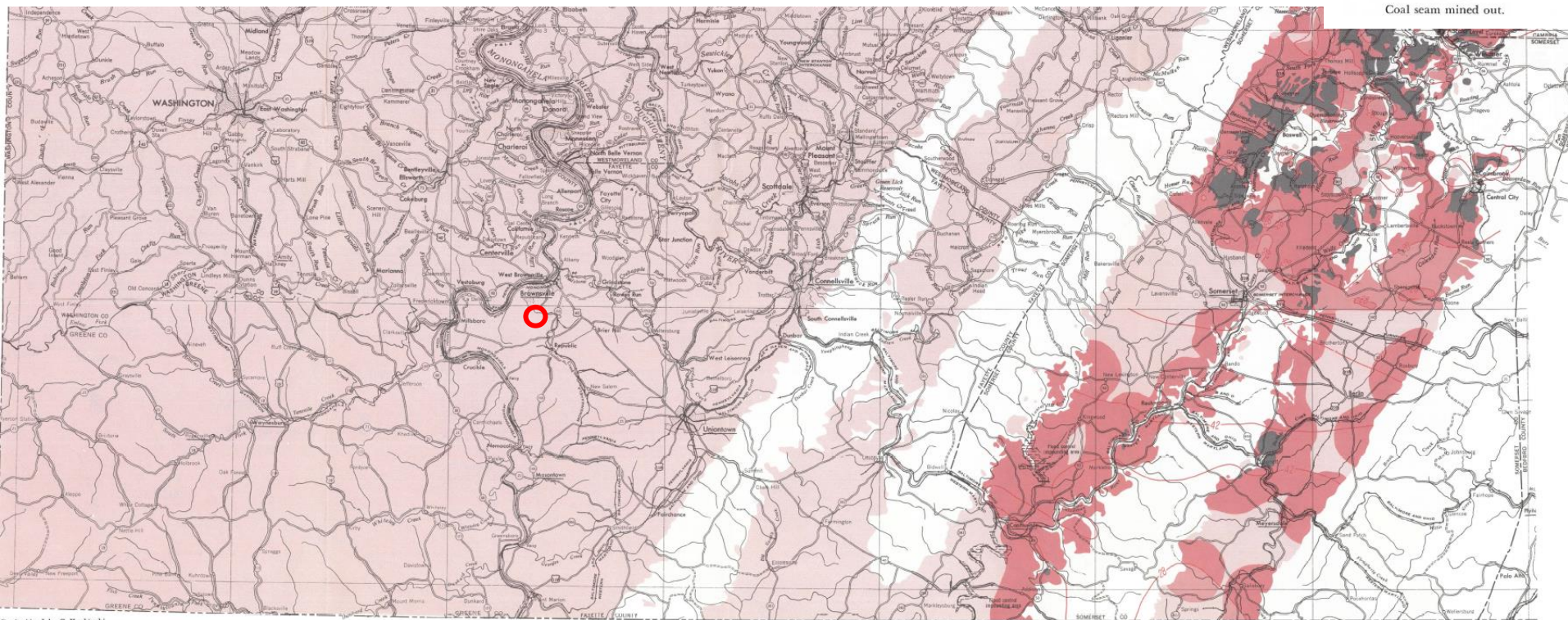
Coal seam measured or indicated and
less than 28 inches thick.



Coal seam measured or indicated and
greater than 28 inches thick.



Coal seam mined out.



Drafted by John G. Kuchinski

DISTRIBUTION AND THICKNESS OF THE UPPER KITTANNING COAL



Plate 7: Lower Freeport Coal

EXPLANATION
RELIABILITY OF DATA AND
GENERAL THICKNESS



Inferred.



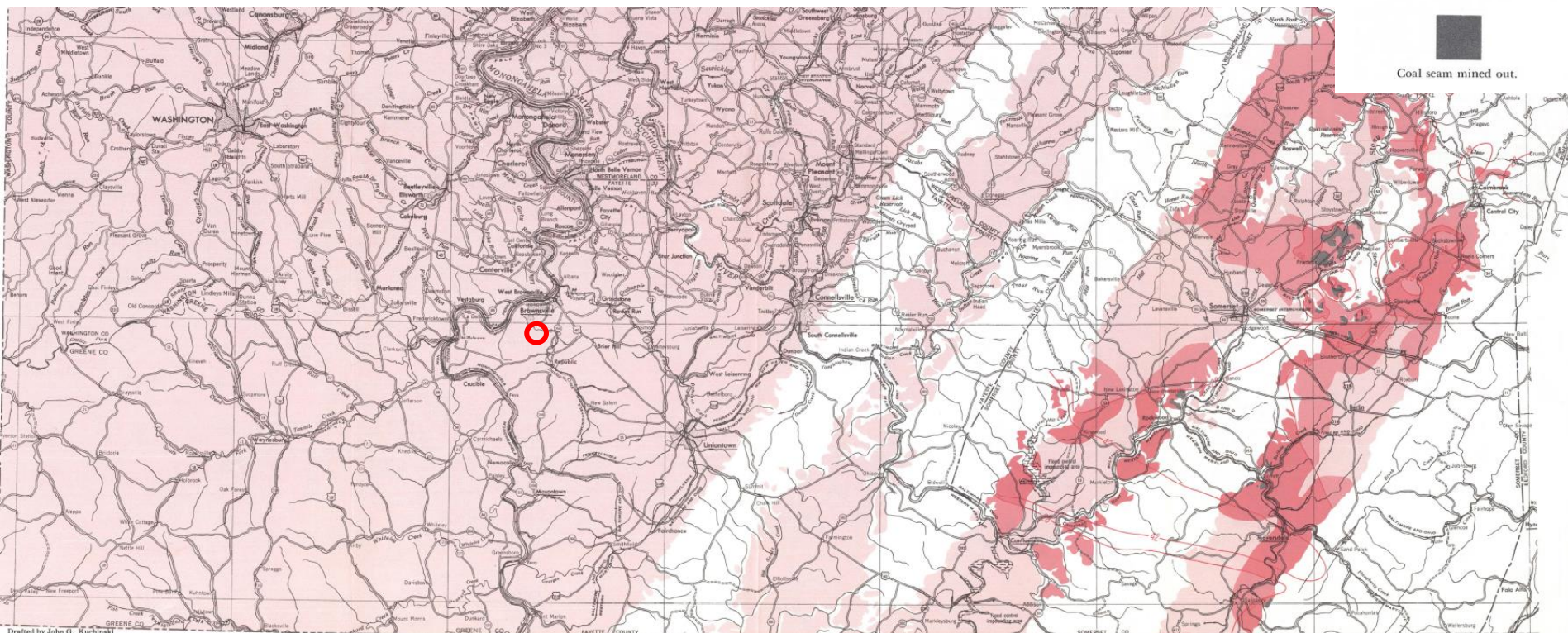
Coal seam measured or indicated and
less than 28 inches thick.



Coal seam measured or indicated and
greater than 28 inches thick.



Coal seam mined out.



DISTRIBUTION AND THICKNESS OF THE LOWER FREEPORT COAL

Plate 8: Upper Freeport Coal

RELIABILITY OF DATA AND
GENERAL THICKNESS



Inferred.



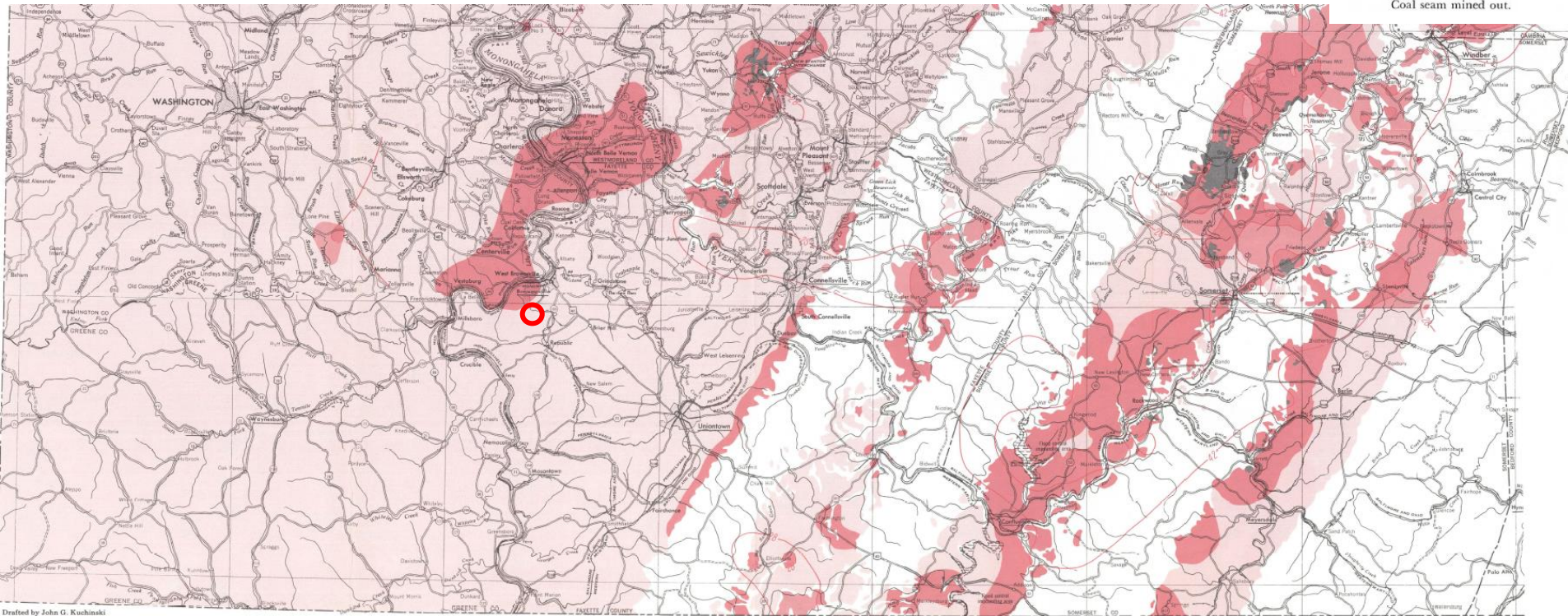
Coal seam measured or indicated and
less than 28 inches thick.



Coal seam measured or indicated and
greater than 28 inches thick.



Coal seam mined out.



DISTRIBUTION AND THICKNESS OF THE UPPER FREEPORT COAL



Plate 9: Pittsburgh Coal

EXPLANATION
RELIABILITY OF DATA AND
GENERAL THICKNESS



Inferred.



Coal seam measured or indicated and
less than 28 inches thick.



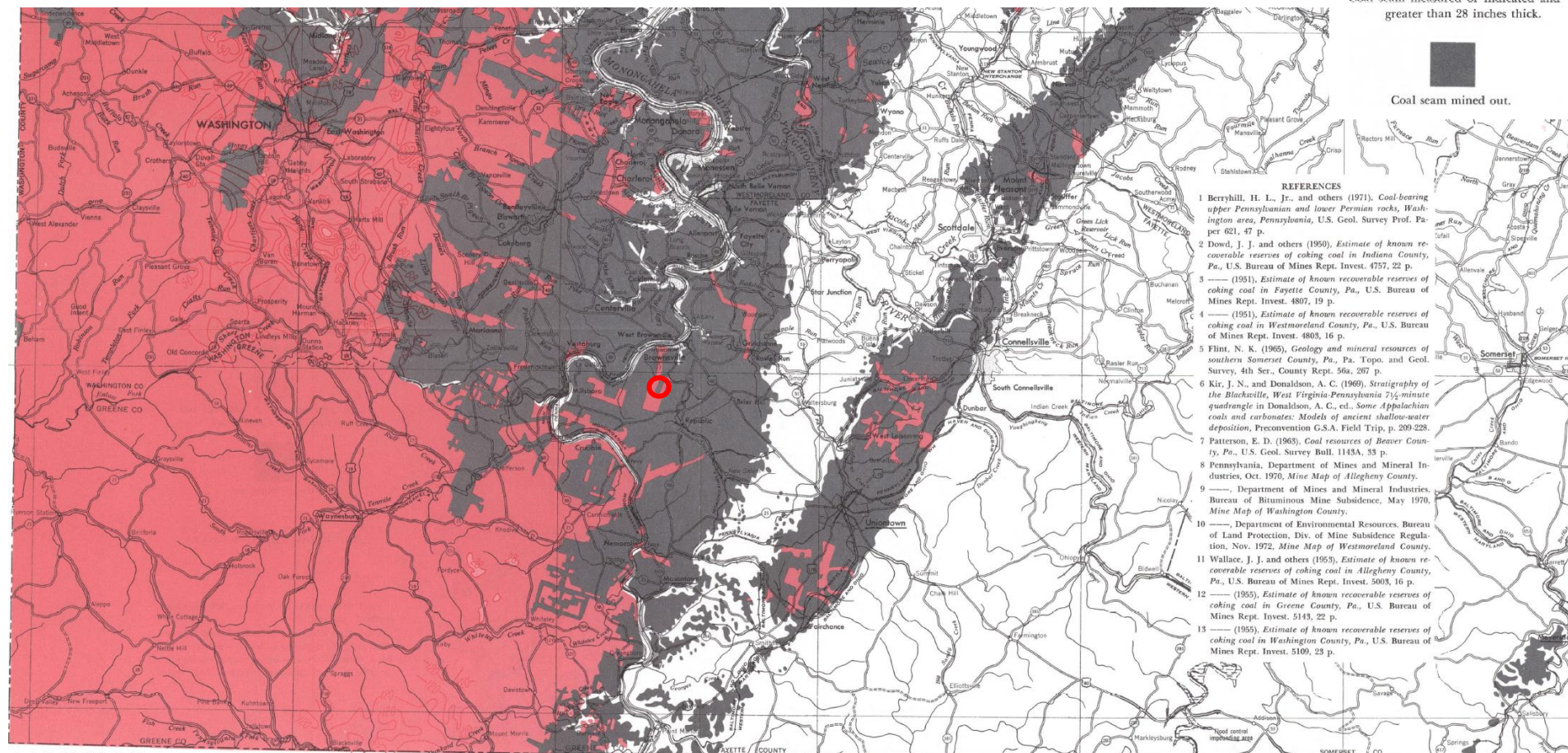
Coal seam measured or indicated and
greater than 28 inches thick.



Coal seam mined out.

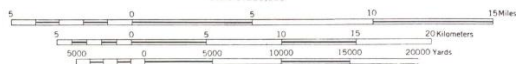
REFERENCES

- Berryhill, H. L. Jr., and others (1971). *Coal-bearing upper Pennsylvanian and lower Permian rocks, Washington area, Pennsylvania*, U.S. Geol. Survey Prof. Paper 621, 47 p.
- Dowd, J. J. and others (1950). *Estimate of known recoverable reserves of coking coal in Indiana County, Pa.*, U.S. Bureau of Mines Rept. Invest. 4757, 22 p.
- (1951). *Estimate of known recoverable reserves of coking coal in Fayette County, Pa.*, U.S. Bureau of Mines Rept. Invest. 4807, 19 p.
- (1951). *Estimate of known recoverable reserves of coking coal in Westmoreland County, Pa.*, U.S. Bureau of Mines Rept. Invest. 4803, 16 p.
- Flint, N. K. (1965). *Geology and mineral resources of southern Somerset County, Pa.*, Pa. Topo. and Geol. Survey, 4th Ser., County Rept. 564, 267 p.
- Kir, J. N., and Donaldson, A. C. (1969). *Stratigraphy of the Blacksville, West Virginia-Pennsylvania 7½-minute quadrangle in Donalson, A. C., ed., Some Appalachian coals and carbonates: Models of ancient shallow-water deposition*, Preconvention G.S.A. Field Trip, p. 209-228.
- Patterson, E. D. (1963). *Coal resources of Beaver County, Pa.*, U.S. Geol. Survey Bull. 1143A, 33 p.
- Pennsylvania, Department of Mines and Mineral Industries, Oct. 1970. *Mine Map of Allegheny County*.
- , Department of Mines and Mineral Industries, Bureau of Bituminous Mine Subsidence, May 1970. *Mine Map of Washington County*.
- , Department of Environmental Resources, Bureau of Land Protection, Div. of Mine Subsidence Regulation, Nov. 1972. *Mine Map of Westmoreland County*.
- Wallace, J. J. and others (1953). *Estimate of known recoverable reserves of coking coal in Allegheny County, Pa.*, U.S. Bureau of Mines Rept. Invest. 5003, 16 p.
- (1955). *Estimate of known recoverable reserves of coking coal in Greene County, Pa.*, U.S. Bureau of Mines Rept. Invest. 5143, 22 p.
- (1955). *Estimate of known recoverable reserves of coking coal in Washington County, Pa.*, U.S. Bureau of Mines Rept. Invest. 5109, 23 p.



Drafted by John G. Kuchinski

Scale 1:250,000



DISTRIBUTION AND THICKNESS OF THE PITTSBURGH COAL

Plate 9: Pittsburgh Coal Detail

EXPLANATION
RELIABILITY OF DATA AND
GENERAL THICKNESS



Inferred.



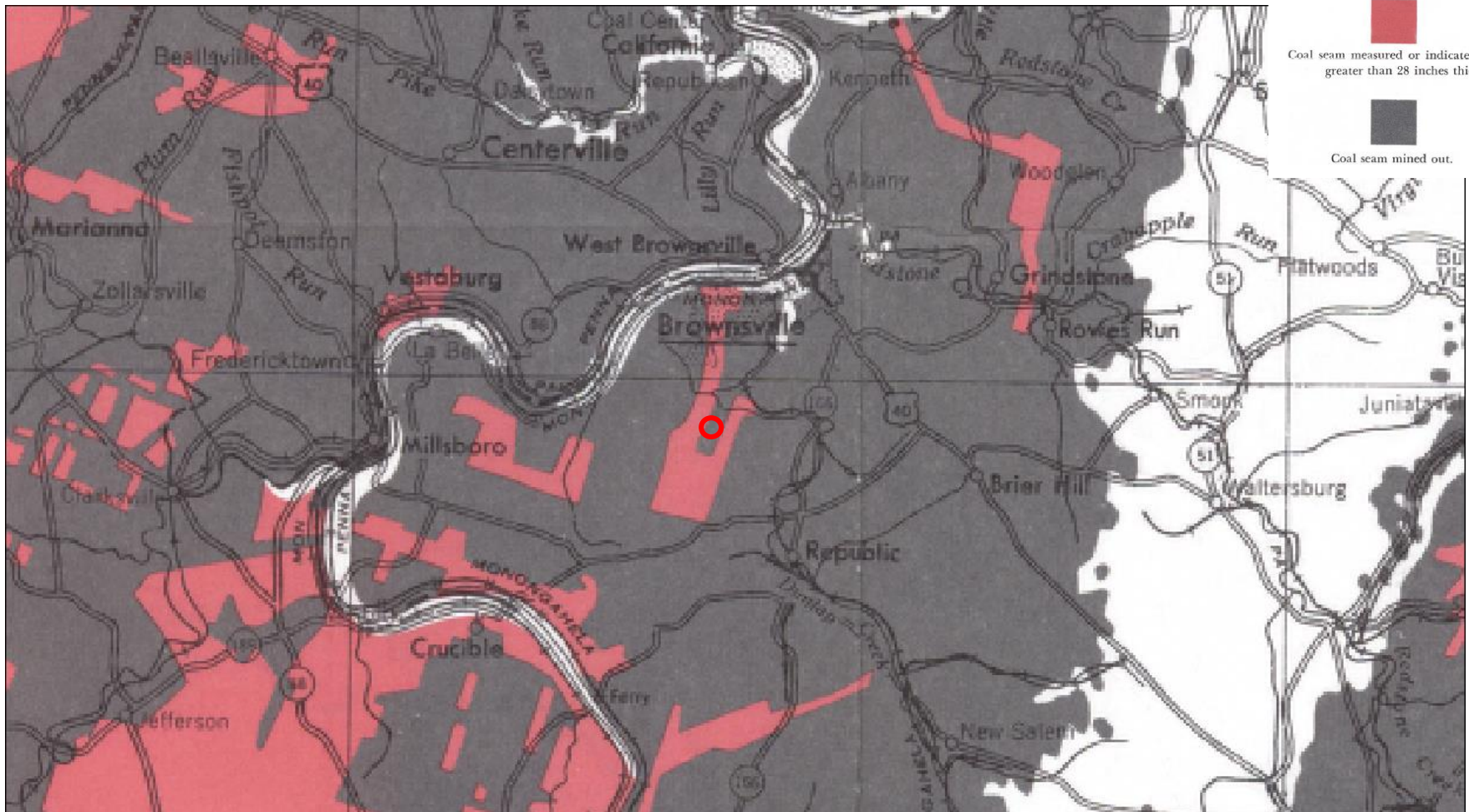
Coal seam measured or indicated and
less than 28 inches thick.



Coal seam measured or indicated and
greater than 28 inches thick.



Coal seam mined out.



EXPLANATION

RELIABILITY OF DATA AND
GENERAL THICKNESS

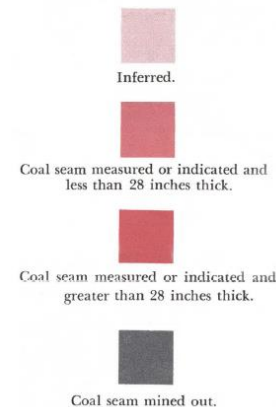


Plate 12: Waynesburg Coal

EXPLANATION
RELIABILITY OF DATA AND
GENERAL THICKNESS



Inferred.



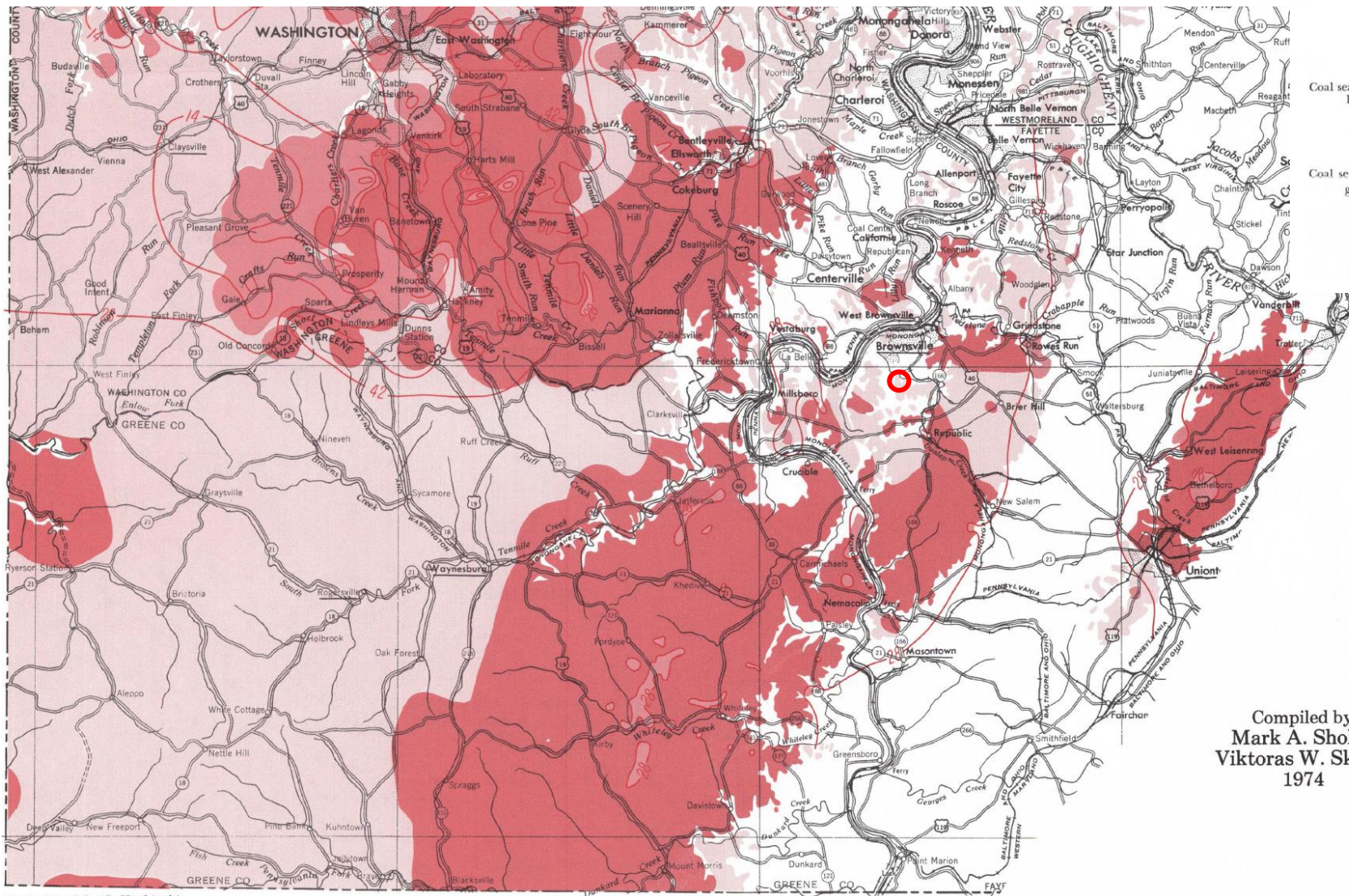
Coal seam measured or indicated and
less than 28 inches thick.



Coal seam measured or indicated and
greater than 28 inches thick.



Coal seam mined out.

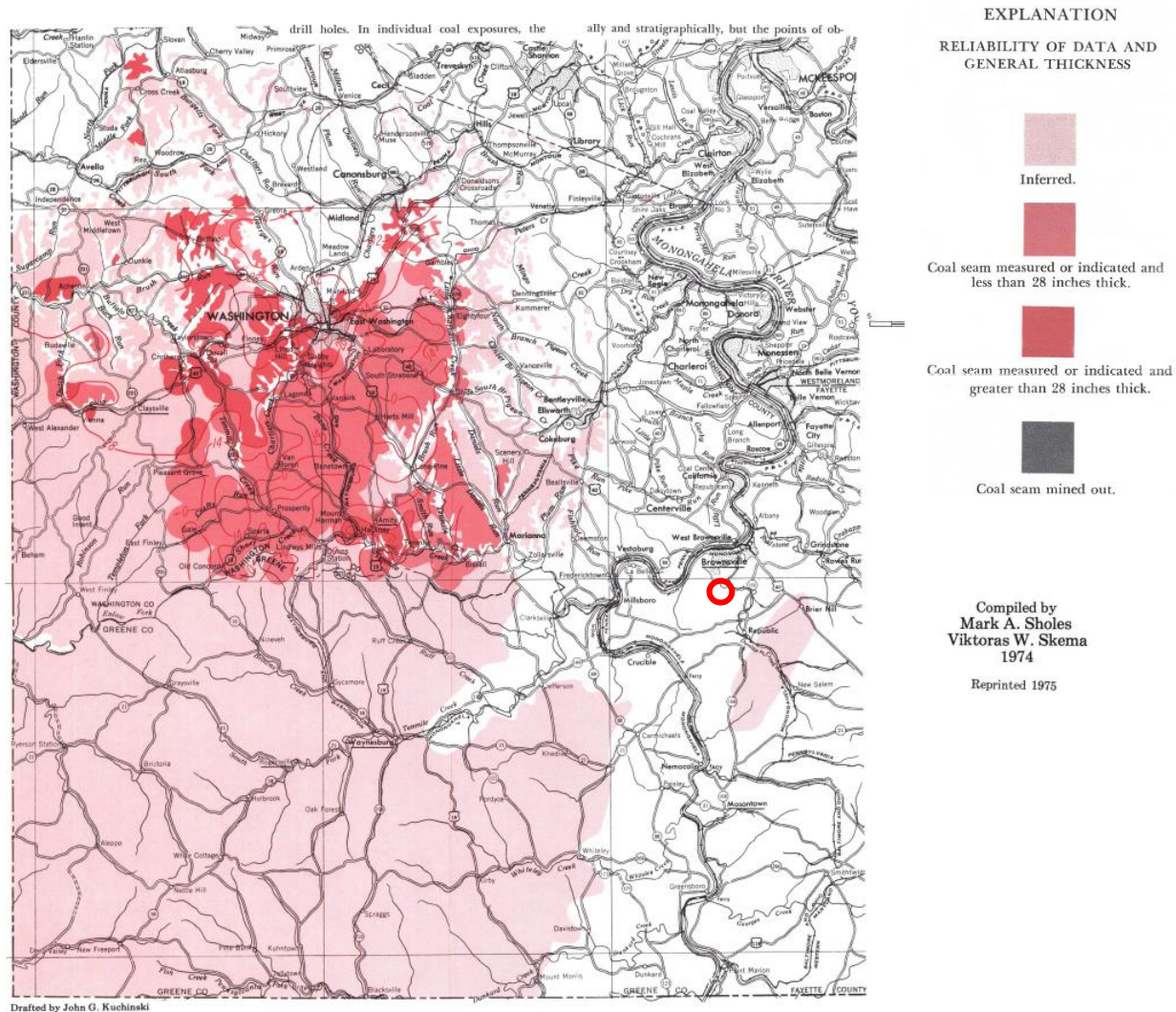


Compiled by
Mark A. Sholes
Viktoras W. Skema
1974

Drafted by John G. Kuchinski

DISTRIBUTION AND THICKNESS OF THE WAYNESBURG COAL

Plate 13: Washington Coal



DISTRIBUTION AND THICKNESS OF THE WASHINGTON COAL

