



human energy®

# Yoder Pad Non-Coal Packet Fayette County, PA

Kelli Randall  
Geologic Operations Coordinator  
2/9/18

A photograph of a Chevron building at night. The building features a large, illuminated Chevron logo on its upper right corner and a large, illuminated "chevron" sign on its lower left side. The building is lit with blue and white lights, and the sky is a deep purple.

chevron

- This information is gathered from:
  - Mineral Resources Report M 91 (Coal Resources of Fayette County, Pennsylvania - Part I, Coal crop lines, mined-out areas, and structure contours
  - Mineral Resources Report M 68 (Bituminous Coal Resources in Western Pennsylvania)

Plate 1 (Upper Mercer Coal): Inferred

Plate 2 (Brookeville Coal): Inferred

Plate 3 (Clarion Coal): Inferred

Plate 4 (L. Kittaning Coal): Inferred

Plate 5 (M. Kittaning Coal): Inferred

Plate 6 (U. Kittaning Coal): Inferred

Plate 7 (L. Freeport Coal): Inferred

Plate 8 (U. Freeport Coal): Inferred

Plate 9 (Pittsburgh Coal): Mined Out

Plate 10 (Redstone Coal): Inferred

Plate 11 (Sewickley Coal): Inferred

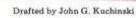
Plate 12 (Waynesburg Coal): Mined Out

Plate 13 (Washington Coal): Not Present



EXPLANATION

RELIABILITY OF DATA AND  
GENERAL THICKNESS



© 2016 Chevron



# Plate 2: Brookville Coal

EXPLANATION  
RELIABILITY OF DATA AND  
GENERAL THICKNESS



Inferred.



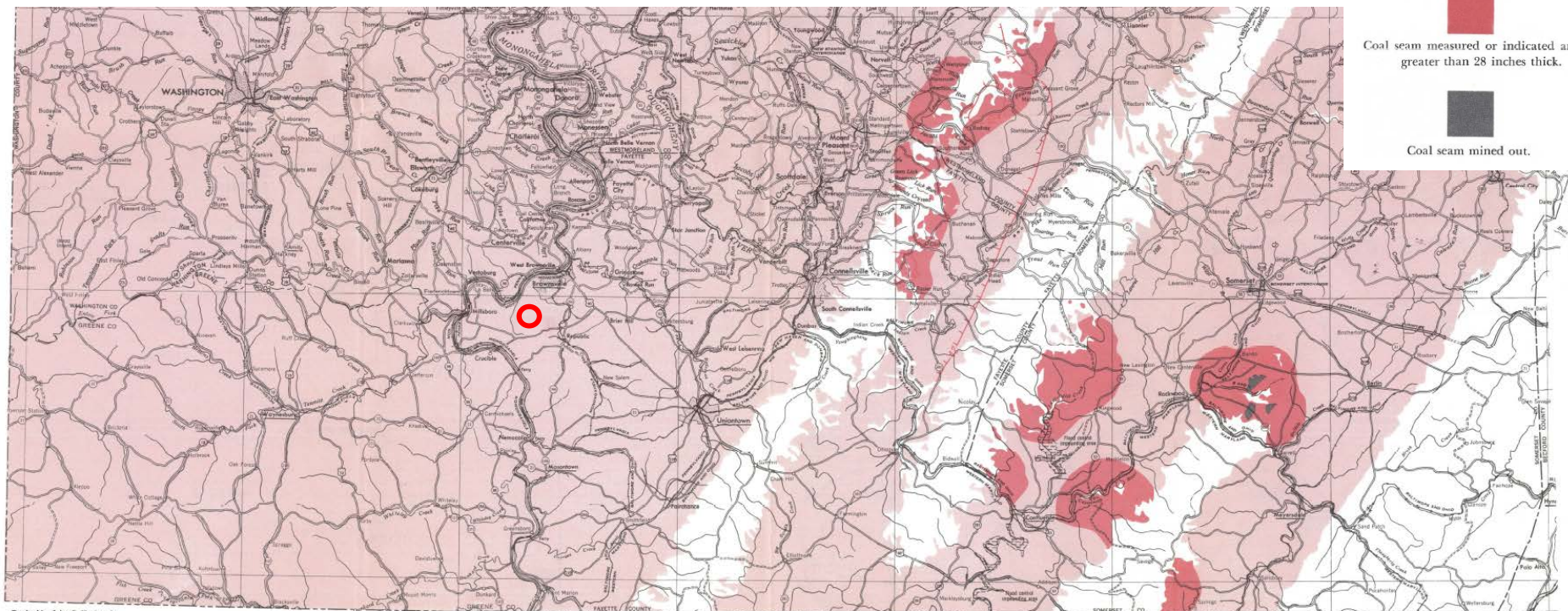
Coal seam measured or indicated and  
less than 28 inches thick.



Coal seam measured or indicated and  
greater than 28 inches thick.



Coal seam mined out.



Drafted by John G. Kuchinski

DISTRIBUTION AND THICKNESS OF THE BROOKVILLE COAL



# Plate 3: Clarion Coal

EXPLANATION  
RELIABILITY OF DATA AND  
GENERAL THICKNESS



Inferred.



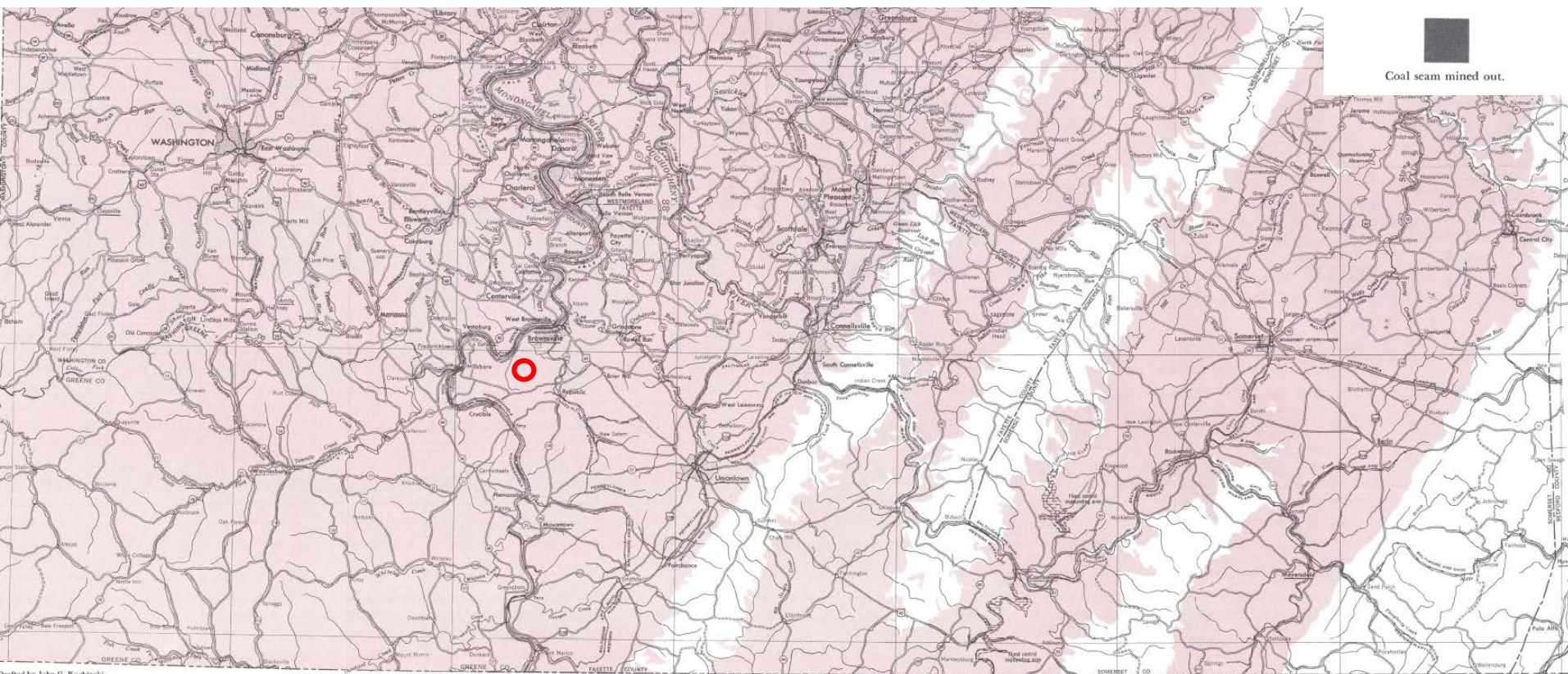
Coal seam measured or indicated and  
less than 28 inches thick.



Coal seam measured or indicated and  
greater than 28 inches thick.



Coal seam mined out.



Drafted by John G. Kuchinski

DISTRIBUTION AND THICKNESS OF THE CLARION COAL





# Plate 4: L. Kittanning Coal

EXPLANATION  
RELIABILITY OF DATA AND  
GENERAL THICKNESS



Inferred.



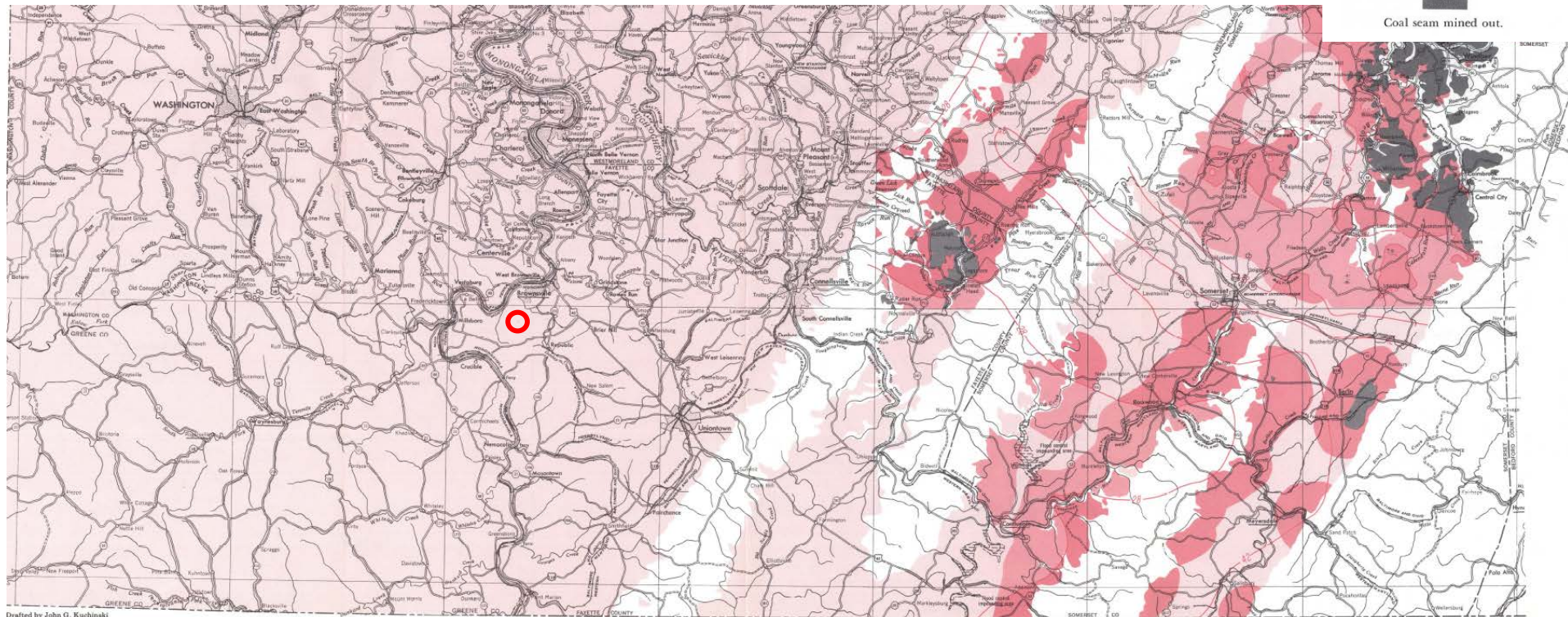
Coal seam measured or indicated and  
less than 28 inches thick.



Coal seam measured or indicated and  
greater than 28 inches thick.



Coal seam mined out.



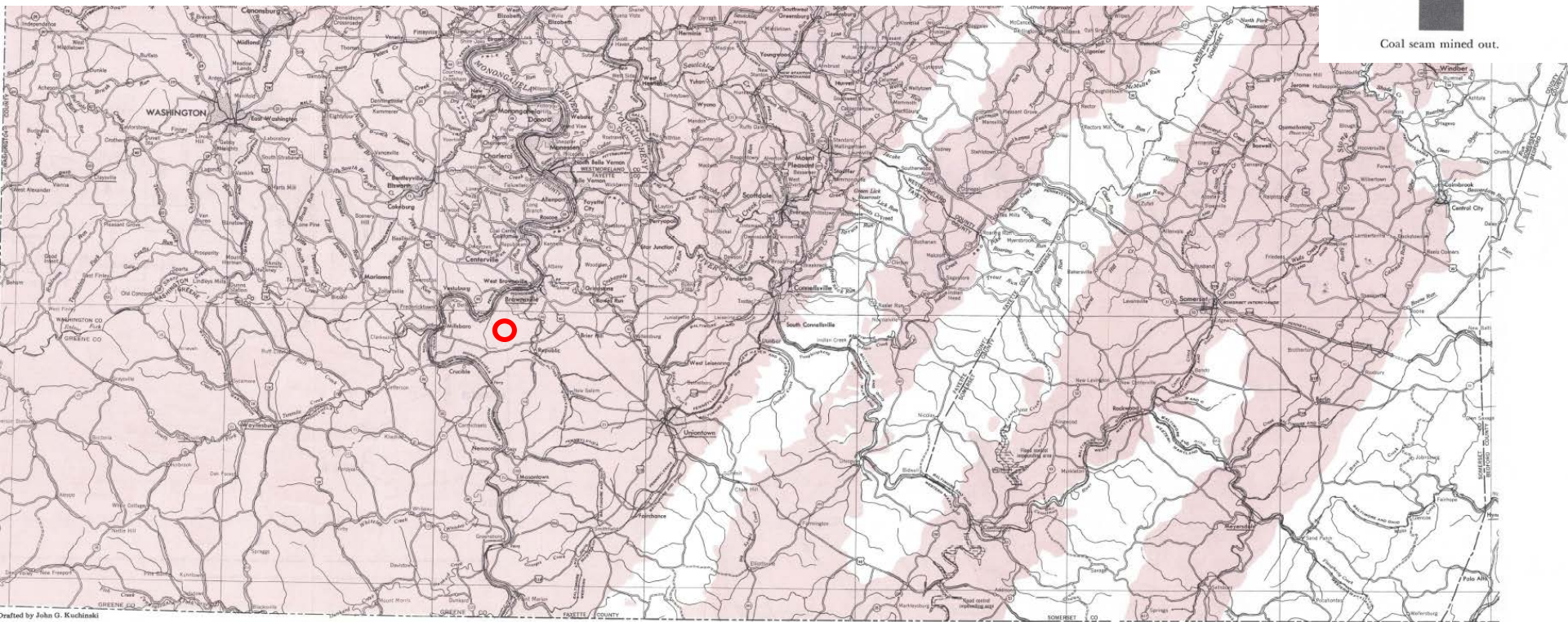
DISTRIBUTION AND THICKNESS OF THE LOWER KITTANNING COAL





EXPLANATION

RELIABILITY OF DATA AND  
GENERAL THICKNESS





# Plate 6: Upper Kittanning Coal

EXPLANATION  
RELIABILITY OF DATA AND  
GENERAL THICKNESS



Inferred.



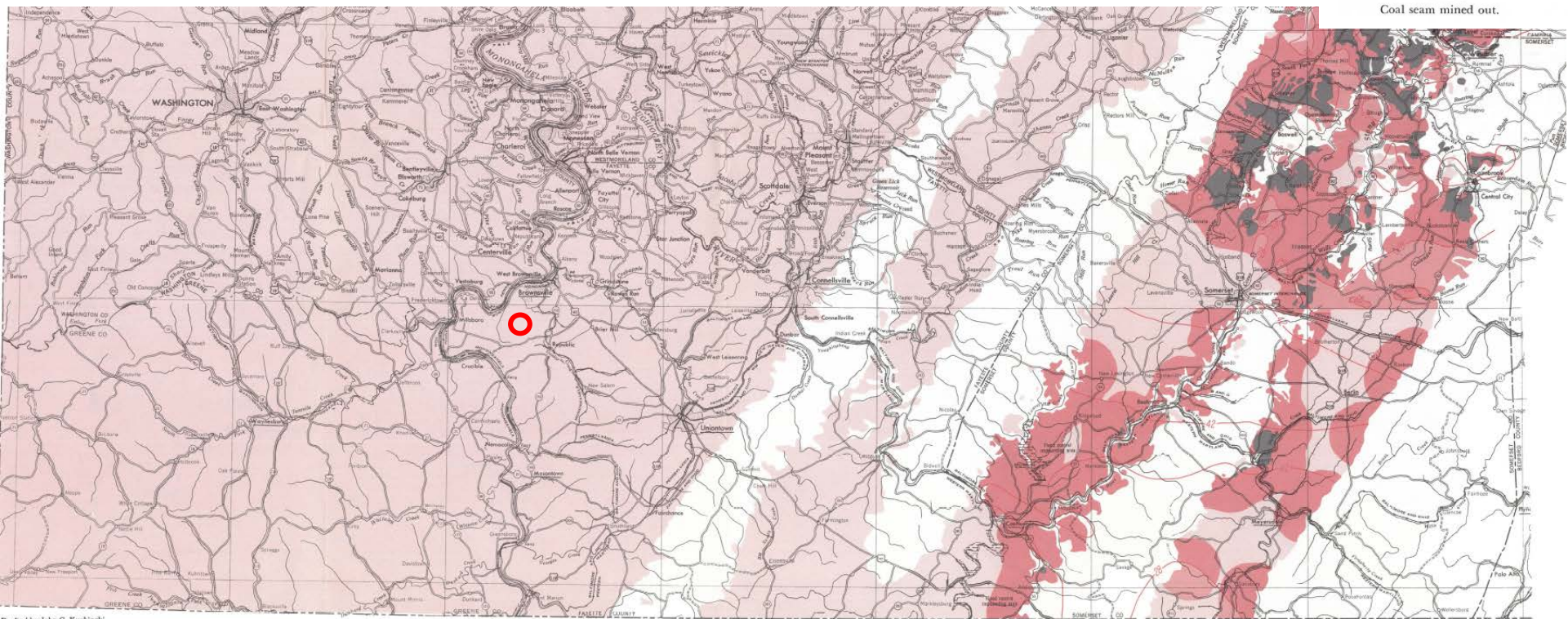
Coal seam measured or indicated and  
less than 28 inches thick.



Coal seam measured or indicated and  
greater than 28 inches thick.



Coal seam mined out.



Drafted by John G. Kuchinski

DISTRIBUTION AND THICKNESS OF THE UPPER KITTANNING COAL





# Plate 7: Lower Freeport Coal

EXPLANATION  
RELIABILITY OF DATA AND  
GENERAL THICKNESS



Inferred.



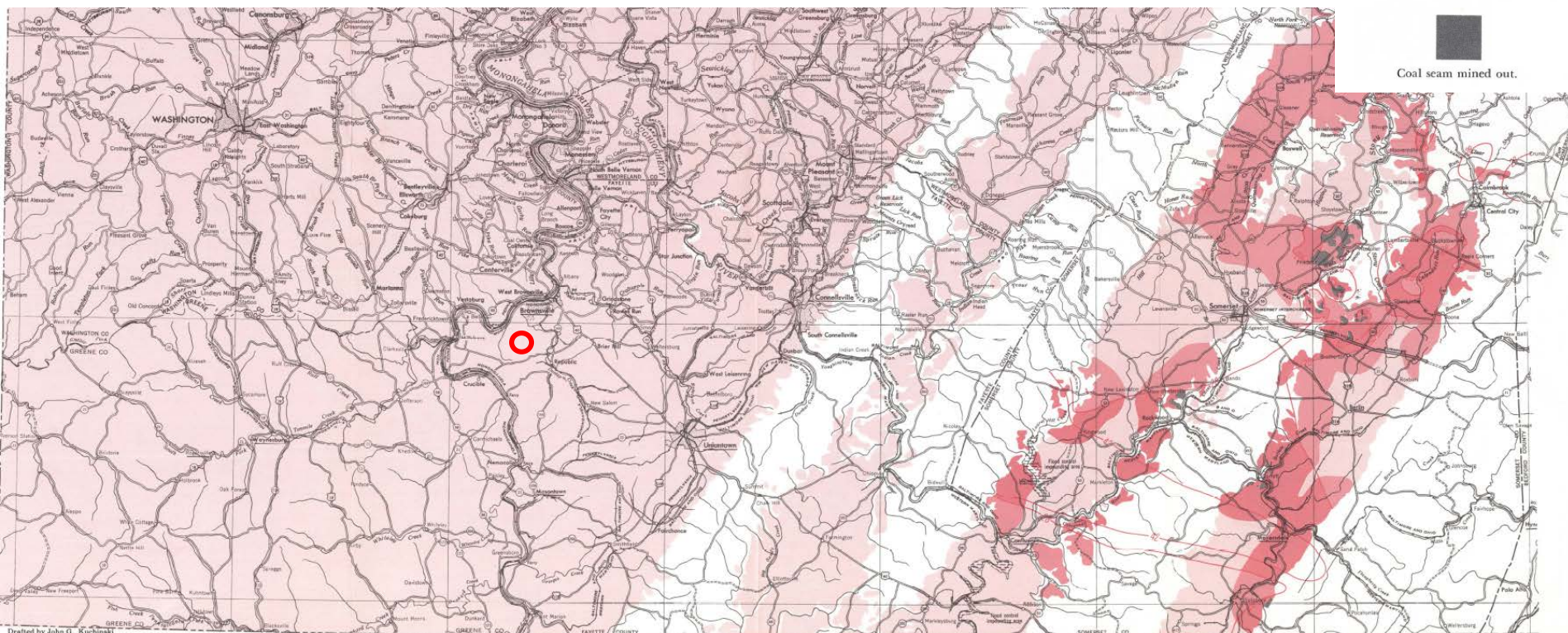
Coal seam measured or indicated and  
less than 28 inches thick.



Coal seam measured or indicated and  
greater than 28 inches thick.



Coal seam mined out.



DISTRIBUTION AND THICKNESS OF THE LOWER FREEPORT COAL



# Plate 8: Upper Freeport Coal

RELIABILITY OF DATA AND  
GENERAL THICKNESS



Inferred.



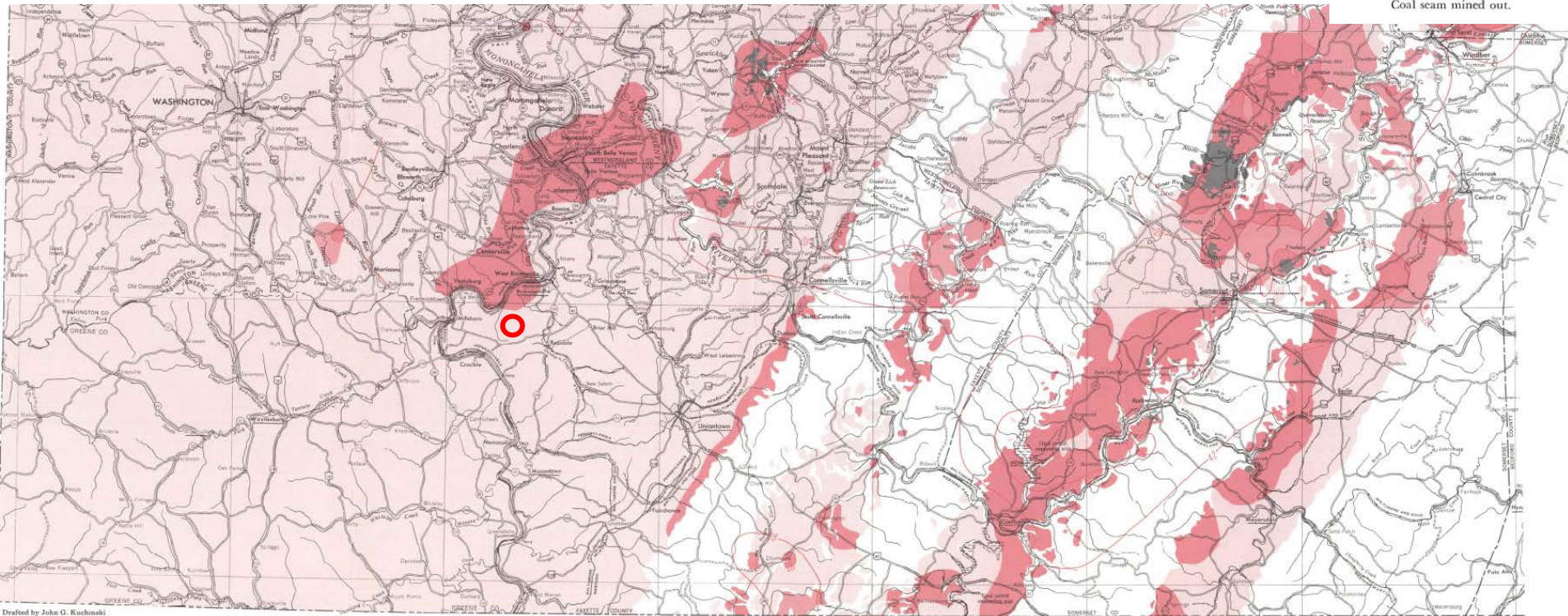
Coal seam measured or indicated and  
less than 28 inches thick.



Coal seam measured or indicated and  
greater than 28 inches thick.



Coal seam mined out.



Drafted by John G. Kuchinski

DISTRIBUTION AND THICKNESS OF THE UPPER FREEPORT COAL





# Plate 9: Pittsburgh Coal

EXPLANATION  
RELIABILITY OF DATA AND  
GENERAL THICKNESS



Inferred.



Coal seam measured or indicated and  
less than 28 inches thick.



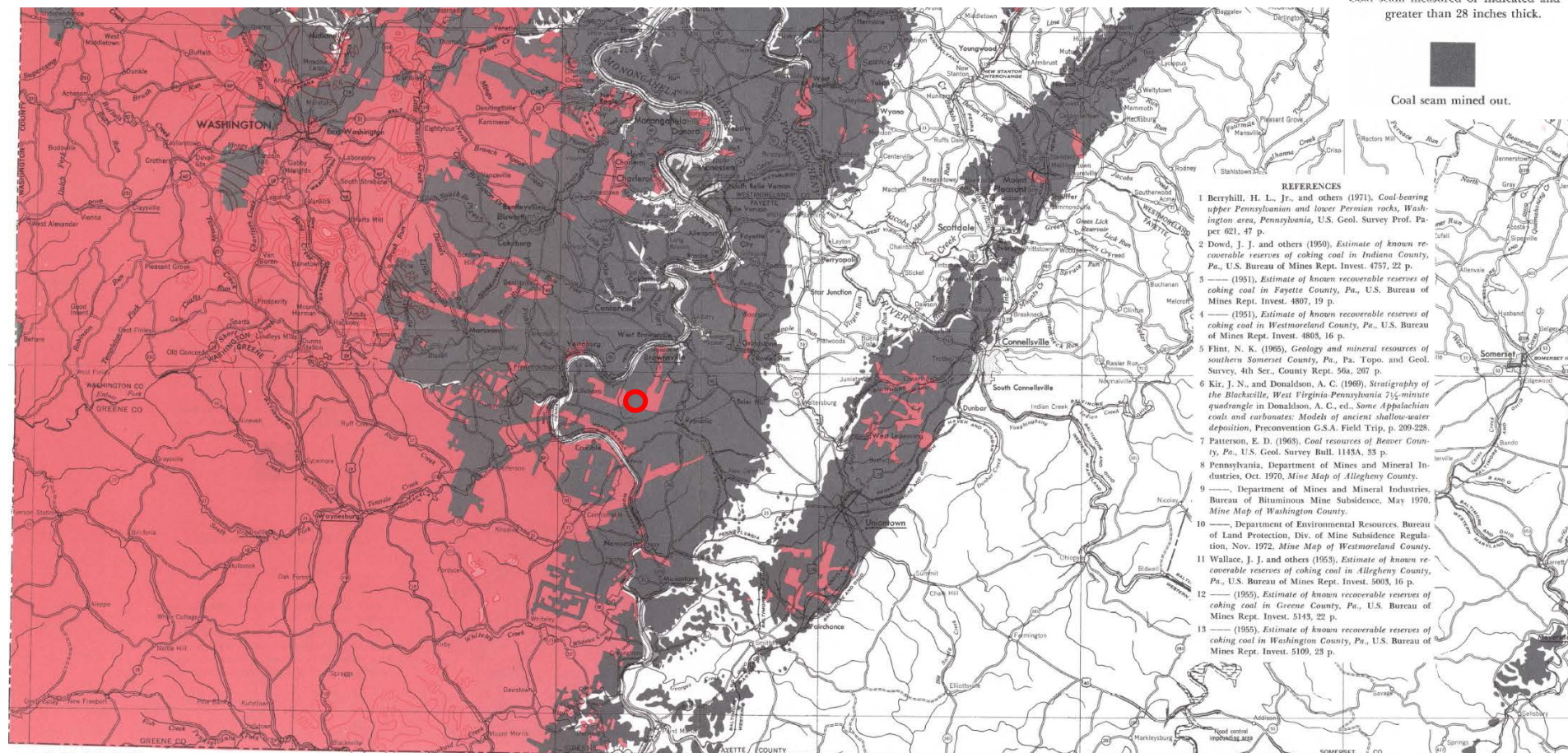
Coal seam measured or indicated and  
greater than 28 inches thick.



Coal seam mined out.

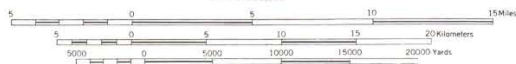
## REFERENCES

- Berryhill, H. L. Jr., and others (1971). Coal-bearing upper Pennsylvanian and lower Permian rocks, Washington area, Pennsylvania, U.S. Geol. Survey Prof. Paper 621, 47 p.
- Dowd, J. J. and others (1950). Estimate of known recoverable reserves of coking coal in Indiana County, Pa., U.S. Bureau of Mines Rept. Invest. 4757, 22 p.
- (1951). Estimate of known recoverable reserves of coking coal in Fayette County, Pa., U.S. Bureau of Mines Rept. Invest. 4807, 19 p.
- (1951). Estimate of known recoverable reserves of coking coal in Westmoreland County, Pa., U.S. Bureau of Mines Rept. Invest. 4803, 16 p.
- Flint, N. K. (1965). Geology and mineral resources of southern Somerset County, Pa., Pa. Topo. and Geol. Survey, 4th Ser., County Rept. 364, 267 p.
- Kir, J. N., and Donaldson, A. C. (1969). Stratigraphy of the Blacksville, West Virginia-Pennsylvania 7½-minute quadrangle in Donaldson, A. C., ed., Some Appalachian coals and carbonates: Models of ancient shallow-water deposition, Preconvention G.S.A. Field Trip, p. 209-228.
- Patterson, E. D. (1963). Coal resources of Beaver County, Pa., U.S. Geol. Survey Bull. 1145A, 33 p.
- Pennsylvania, Department of Mines and Mineral Industries, Oct. 1970. Mine Map of Allegheny County.
- , Department of Mines and Mineral Industries, Bureau of Bituminous Mine Subsidies, May 1970. Mine Map of Washington County.
- , Department of Environmental Resources, Bureau of Land Protection, Div. of Mine Subsidies Regulation, Nov. 1972. Mine Map of Westmoreland County.
- Wallace, J. J. and others (1953). Estimate of known recoverable reserves of coking coal in Allegheny County, Pa., U.S. Bureau of Mines Rept. Invest. 5003, 16 p.
- (1955). Estimate of known recoverable reserves of coking coal in Greene County, Pa., U.S. Bureau of Mines Rept. Invest. 5143, 22 p.
- (1955). Estimate of known recoverable reserves of coking coal in Washington County, Pa., U.S. Bureau of Mines Rept. Invest. 5109, 23 p.



Drafted by John G. Kuchinski

Scale 1:250,000

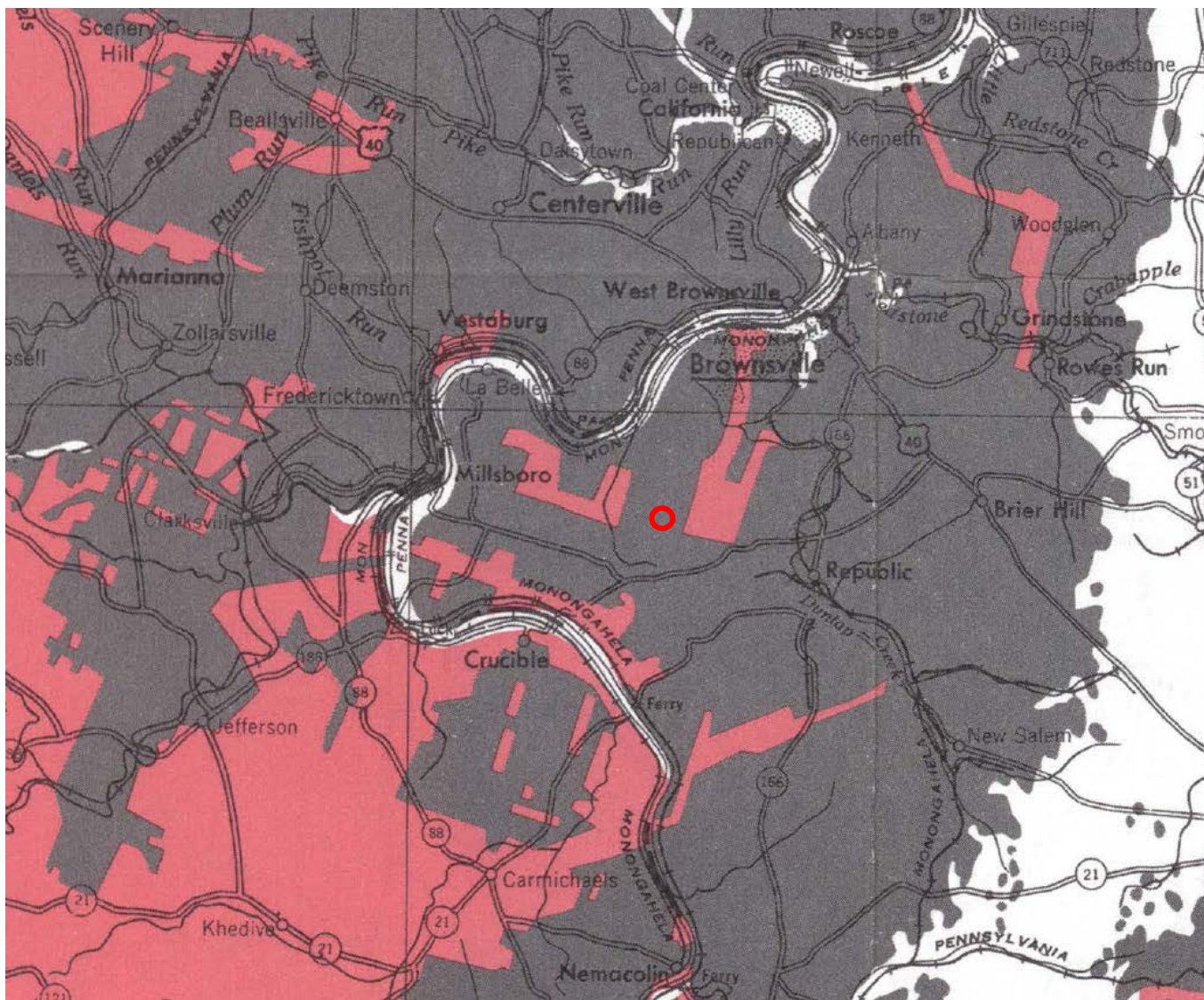
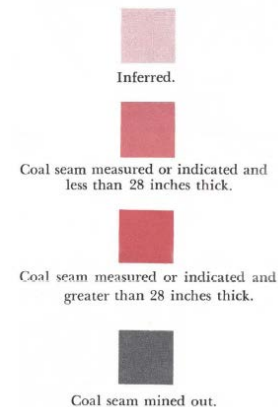


## DISTRIBUTION AND THICKNESS OF THE PITTSBURGH COAL



# Plate 9: Pittsburgh Coal Detail

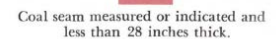
EXPLANATION  
RELIABILITY OF DATA AND  
GENERAL THICKNESS





### EXPLANATION

RELIABILITY OF DATA AND  
GENERAL THICKNESS



Coal seam measured or indicated and greater than 28 inches thick.

Coal seam mined out.

## DISTRIBUTION AND THICKNESS OF THE REDSTONE COAL







# Plate 12: Waynesburg Coal

EXPLANATION  
RELIABILITY OF DATA AND  
GENERAL THICKNESS



Inferred.



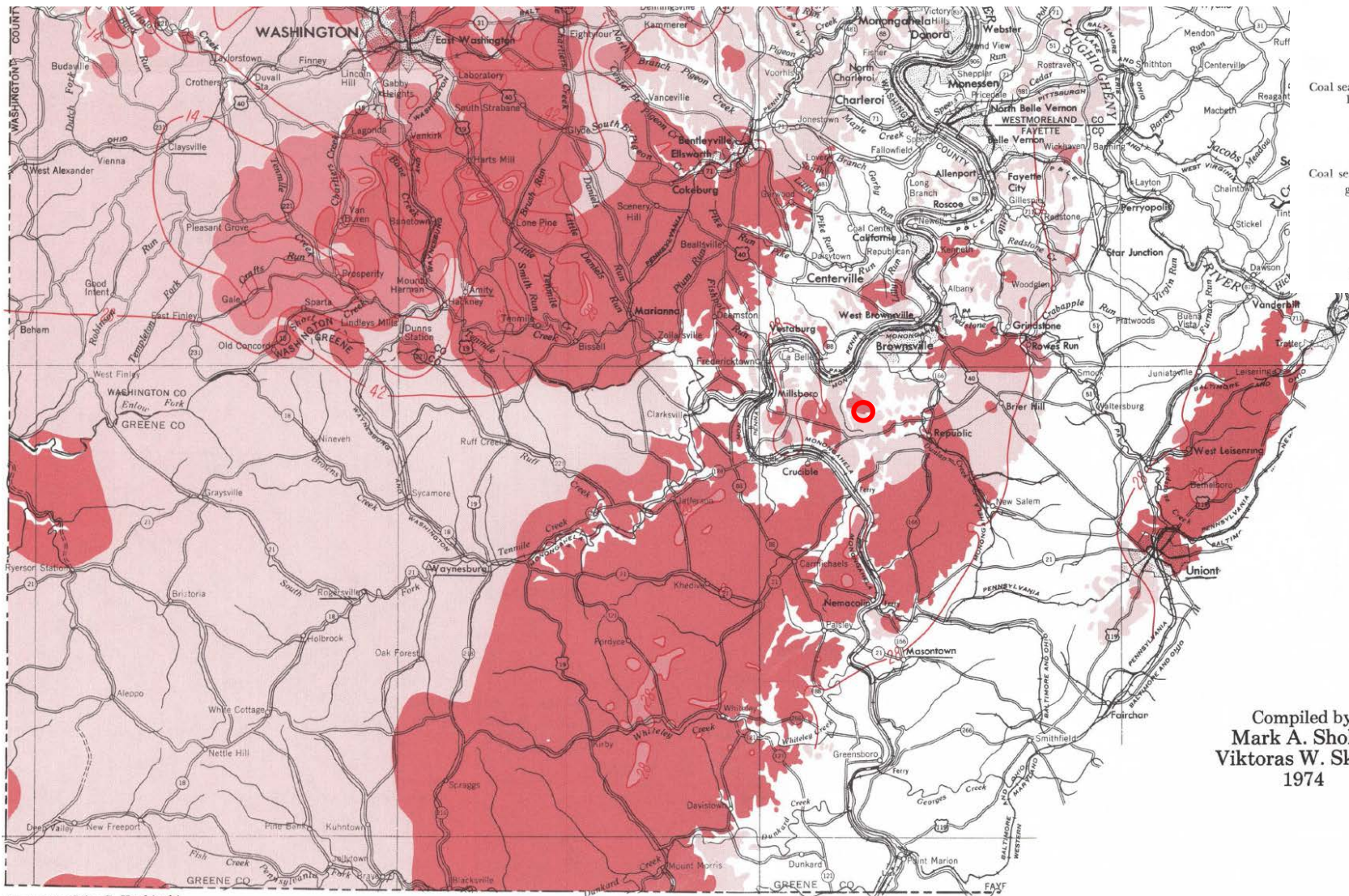
Coal seam measured or indicated and  
less than 28 inches thick.



Coal seam measured or indicated and  
greater than 28 inches thick.



Coal seam mined out.



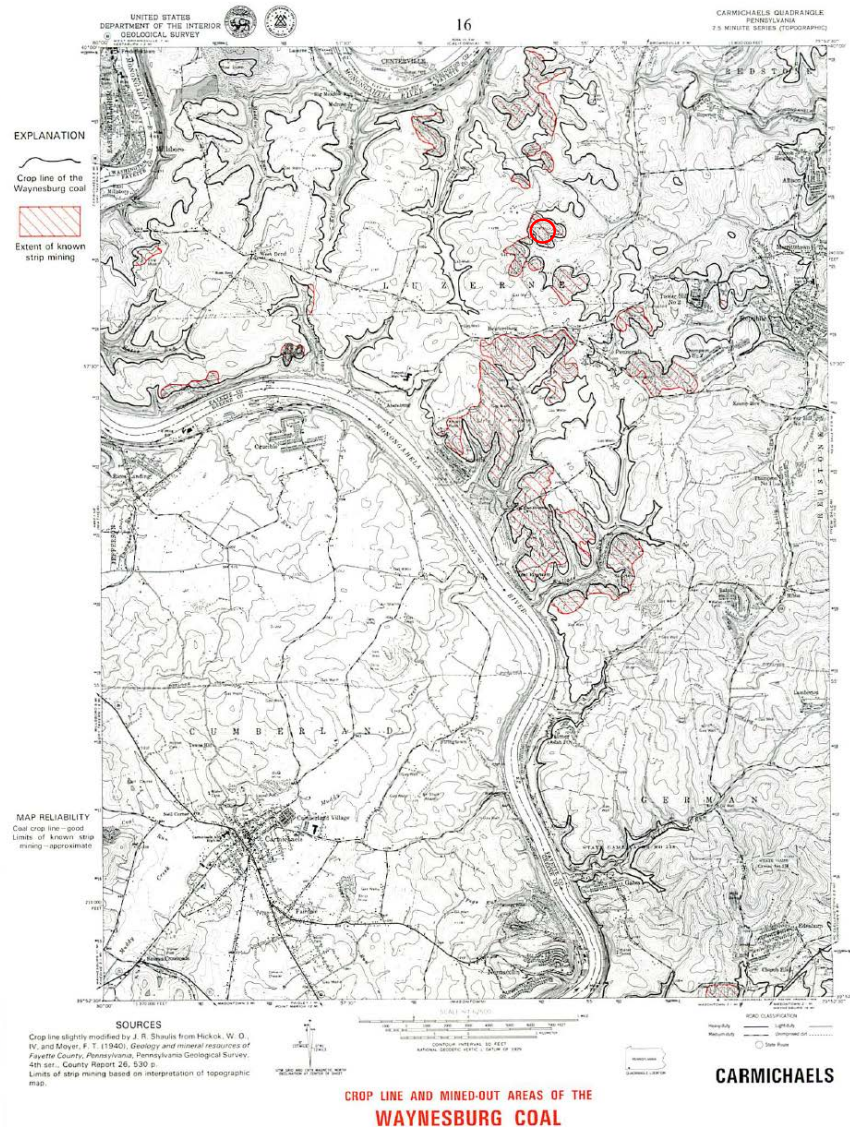
Compiled by  
Mark A. Sholes  
Viktoras W. Skema  
1974

Drafted by John G. Kuchinski

## DISTRIBUTION AND THICKNESS OF THE WAYNESBURG COAL

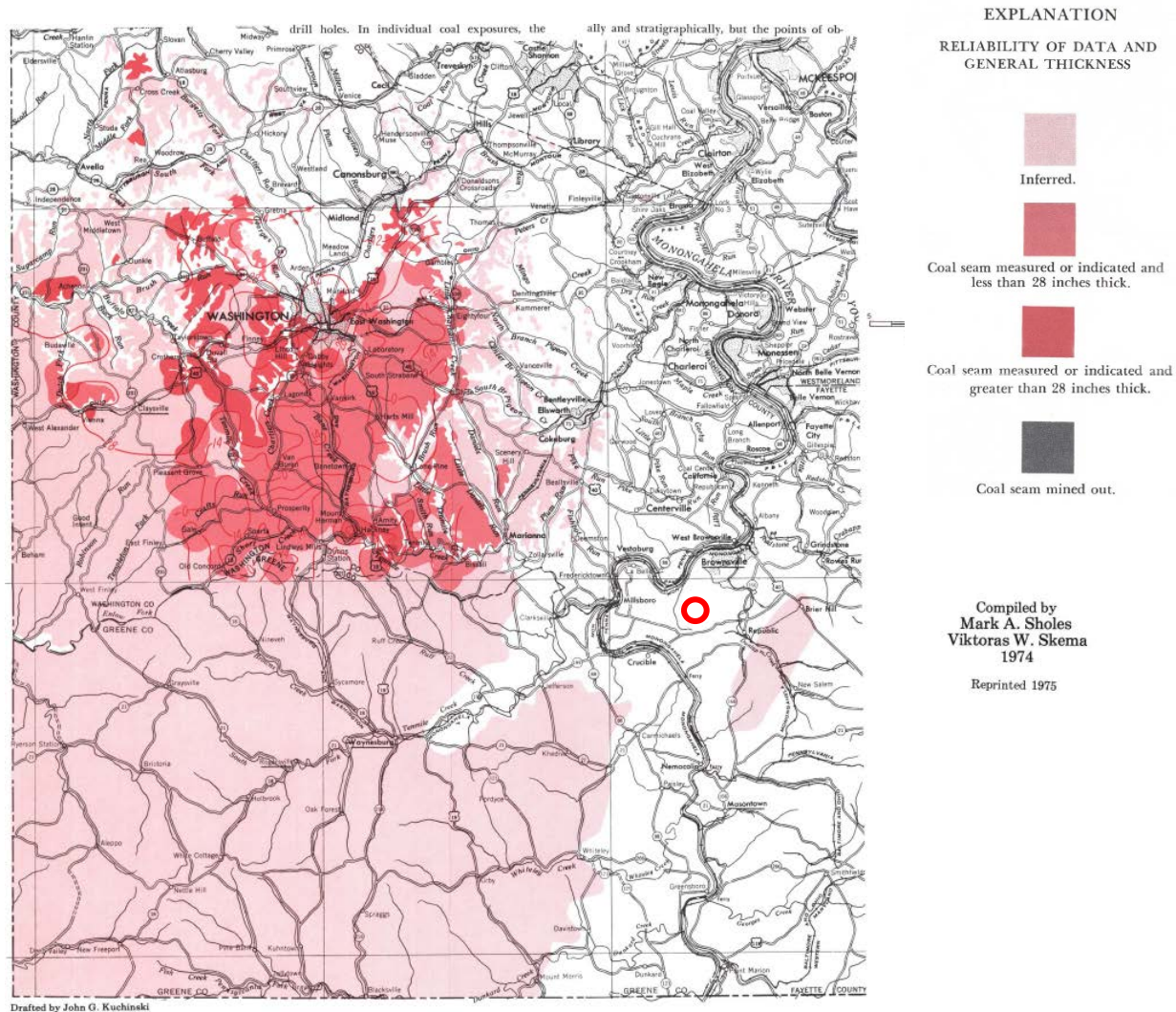


# Plate 12: Waynesburg Coal Mining





# Plate 13: Washington Coal



**DISTRIBUTION AND THICKNESS OF THE WASHINGTON COAL**

